

PITT SOCIAL WORK

A weekly update of news from the University of Pittsburgh School of Social Work

SEPTEMBER 11, 2020

Student fills void of Black hair care products for kids in foster care, peers



BASW alumna and current MSW student Ashlé Hall drew on her own experiences as a Black woman to help develop hair care products for kids and friends in need. [Read more on Pittwire.](#)

CRSP director helps develop new Pitt course



CRSP Director James Huguley worked with colleagues and University administration to help develop an anti-Black racism course for first-year students. The course, "Anti-Black Racism: History, Ideology, and Resistance," will be taught by a series of Pitt professors. [Read more in the University Times.](#)

New study looks at effects of a mass shooting on helping professionals



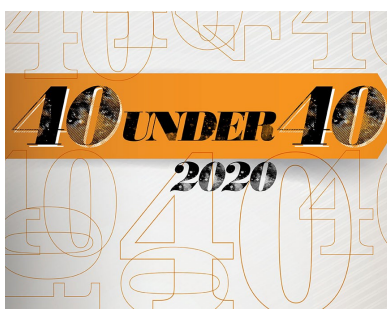
A unique new study from professors Ray Engel and Danny Rosen, along with PhD alum Daniel Lee, looks at the impact of the Tree of Life shooting on social service agency and educational institution staff. It is now available online from [JAMA Network Open](#). Read more about their work on [UPI.com](#).

Faculty member's article published in AIDS Care



Assistant Professor Darren Whitfield's new article "Risk compensation in HIV PrEP adherence among Black men who have sex with men in HPTN 073 study" is now [available online.](#)

Pitt Social Work alums honored by Pittsburgh Magazine



Pittsburgh Magazine's 2020 40 Under 40 include Pitt Social Work alumni Jose Diaz, Natalie Bencavinga, and Sharise Nance. [Read more about their achievements.](#)

Doctoral student wins CSWE Minority Fellowship



PhD student Laurenia Mangum has been named a 2020-20212 Council on Social Work Education (CSWE) Minority Fellow. The MFP aims to reduce health disparities and improve health-care outcomes of racially and ethnically diverse populations by increasing the number of culturally competent behavioral health professionals with doctoral degrees available to underserved populations in the public and private nonprofit sectors.

Doctoral student wins CSWE Minority Fellowship



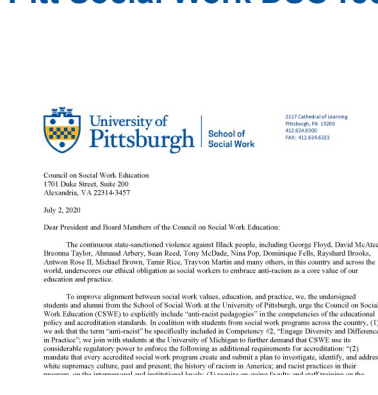
PhD student Cortney VanHook has been named a 2020-20212 Council on Social Work Education (CSWE) Minority Fellow. The CSWE MFP doctoral fellowship is designed for social workers, with a social work master's degree, who are preparing for leadership in practice, research, teaching, and/or policy promulgation in mental health and/or substance abuse with racial/ethnic minorities.

How Do We Attract People to Pittsburgh?



Alumnus Dave Feehan sat down with *Pittsburgh Quarterly* to discuss neighborhood revitalization and how it relates to Pittsburgh. [Read more in Pittsburgh Quarterly.](#)

Pitt Social Work DSO recognized for their anti-racist work



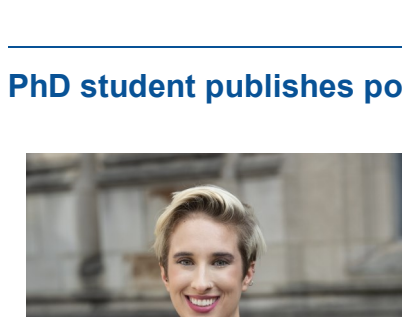
The Pitt Social Work [Doctoral Student Organization \(DSO\)](#)'s work advocating for CSWE accreditation standards to be made explicitly anti-racist and recognize anti-Blackness in social work and society was acknowledged in a newly published paper by Dr. Henrika McCoy. [The article "Black Lives Matter, and Yes, You are Racist: The Parallelism of the Twentieth and Twenty-First Centuries" was published in the Child and Adolescent Social Work Journal.](#)

Pitt celebrates Year of Engagement with call for proposals



Pitt's Year of Engagement is looking for proposals! Pitt's Year of Engagement is running a [Fourteen Day Social Media Challenge](#), and also [currently accepting proposals for funded projects](#) until October 1. [More details available on their website.](#)

PhD student publishes policy brief



Doctoral student LauraEllen Ashcraft, one of the first cohort of the SSW PhD Student Traineeship in Research Communication Program, wrote the brief: "Reduce Rural Opioid Addiction: Telemedicine Parity is Needed in Pennsylvania" addressed the fact that in the U.S. rural communities experience higher rates of death due to opioid usage. [Read the brief online.](#)

Announcements:

Complete your Census today to show your community you care about its future! Visit <https://2020census.gov> or call 1-844-330-2020 to complete your 2020 Census response. Encourage others to do the same!

Upcoming Events

- September 16, 2020: **Career Workshop: Effective Interviewing.** 5pm-6pm. [Register here.](#)
- September 17, 2020: **Faces of Social Work Alumni Event.** 5pm-6:30pm. [Register here.](#)
- September 18, 2020: **SEC September Ice Cream Social.** 6pm-7:30pm. [Zoom information](#)
- September 21, 2020: **Research Break: Dean Farmer -- "It all Makes Sense in Retrospect: Intertwining Life and Research".** 12pm-1pm. Check SSW Outlook Calendar for Zoom Link.
- September 23, 2020: **Social Work Speaker Series: Juvenile Delinquency and Violence: Ecological Factors .** 12pm-1pm. [More information.](#)
- September 30, 2020: **Alumni Speaker Series: Tracy Soska areer Workshop: Effective Interviewing.** 12pm-1pm. [Register here.](#)
- October 19, 2020: **Distinguished Alumni Awards Virtual Celebration areer Workshop: Effective Interviewing.** 5:30pm-8pm. [More information.](#)

For the latest announcements, as well as faculty, staff, student, and community resources related to the COVID-19 pandemic please visit the Pitt School of Social Work [website.](#)

University of Pittsburgh School of Social Work
www.socialwork.pitt.edu
2117 Cathedral of Learning 4200 Fifth Avenue Pittsburgh, PA 15260
(412) 624-6304

To submit something for the weekly update please email shm87@pitt.edu by Friday morning.

[Click to unsubscribe](#)

