

PITT SOCIAL WORK

A weekly update of news from the University of Pittsburgh School of Social Work

APRIL 27, 2020

Congratulations to the Class of 2020!



Although we weren't able to celebrate in person, over 215 attendees joined together to celebrate the Class of 2020 online. Watch the ceremony and see the program on the [Pitt Social Work website](#).

2020 graduates profiled in Pitt Magazine



The new online photo essay from Pitt Magazine titled "In the Lead," features student leaders from across the University, including several graduating social work students. Students profiled include: MSW/MPH student [India Hunter](#), MSW student [Anette Nance](#), and MSW student [Charles "Tre" Tipton](#).

Faculty member and BASW student publish article



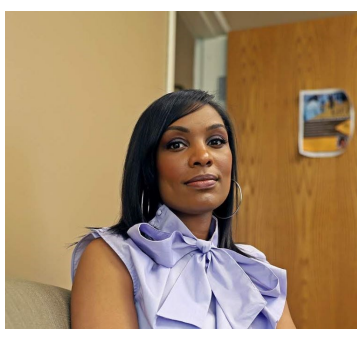
Research Assistant Professor May Beth Rauktis and graduating BASW student Grace Provost are co-authors on the new article "Surf.Art in Portugal: Daring, Accomplishing and Transforming Portuguese Youth and Their Communities" published in the Global Journal of Community Psychology Practice. [Read here](#).

ICYMI: CRSP Speaker Series video now online



The April 9, 2020 Center on Race and Social Problems Speaker Series: "Confronting Racial Bias in Social Media Data and AI Tools against Gun Violence" by Desmond U. Patton, PhD, MSW is now available online. [Watch here](#).

Alumna writes about managing compassion fatigue



Alumna Sharise Nance wrote an article for Public Source about the challenge frontline workers face and how it puts them at high risk for compassion fatigue. [Read more](#).

Announcements:

Complete your Census today to show your community you care about its future! Visit <https://2020census.gov> or call 1-844-330-2020 to complete your 2020 Census response. Encourage others to do the same!

Correction: Alumnus Andre Stevenson is a social work professor at Elizabeth City State University (ECSU).

Upcoming Events

April 27, 2020: **Community Based Participatory Research (CBPR) Report Out!**. 5:30-7pm <https://pitt.zoom.us/j/92853449620>

For the latest announcements, as well as faculty, staff, student, and community resources related to the COVID-19 pandemic please visit the Pitt School of Social Work [website](#).

University of Pittsburgh School of Social Work

www.socialwork.pitt.edu

2217 Cathedral of Learning 4200 Fifth Avenue Pittsburgh, PA 15260

(412) 624-6304

To submit something for the weekly update please email shm87@pitt.edu by Friday morning.

[Click to unsubscribe](#)

